

Figure 1: Estimates of Labor Force, Employment, and Unemployment - Southwest Michigan
 By Place of Residence/Seasonally Unadjusted. July, 2014 **

Areas	CIVILIAN LABOR FORCE					EMPLOYMENT					UNEMPLOYMENT RATES		
	July 2014	June 2014	July 2013	Monthly Change	Annual Change	July 2014	June 2014	July 2013	Monthly Change	Annual Change	July 14	June 14	July 13
Battle Creek MSA	67,200	66,900	66,300	300	900	62,200	62,400	60,400	-200	1,800	7.4	6.7	8.9
Jackson MSA	72,200	71,700	72,300	500	-100	66,200	66,200	65,100	0	1,100	8.3	7.7	10.0
Kalamazoo MSA	164,400	164,800	162,300	-400	2,100	152,600	153,800	148,300	-1,200	4,300	7.1	6.7	8.6
Kalamazoo Co.	128,750	129,075	127,200	-325	1,550	119,850	120,725	116,450	-875	3,400	6.9	6.5	8.4
Van Buren Co.	35,600	35,725	35,125	-125	475	32,800	33,025	31,875	-225	925	7.9	7.6	9.3
Niles-BH MSA	74,800	74,700	74,700	100	100	68,900	69,200	67,300	-300	1,600	7.9	7.4	9.9
Allegan Co.	58,225	57,875	56,450	350	1,775	54,375	54,375	51,950	0	2,425	6.6	6.1	8.0
Barry Co.	31,100	31,725	29,750	-625	1,350	29,150	29,950	27,500	-800	1,650	6.3	5.5	7.6
Branch Co.	20,100	20,275	20,025	-175	75	18,575	18,850	18,075	-275	500	7.6	7.1	9.7
Cass Co.	25,450	25,825	24,775	-375	675	23,625	24,125	22,575	-500	1,050	7.2	6.6	8.8
Hillsdale Co.	19,700	19,950	19,625	-250	75	17,925	18,325	17,400	-400	525	8.9	8.2	11.3
Lenawee Co.	44,675	45,100	44,525	-425	150	40,775	41,700	39,800	-925	975	8.7	7.6	10.6
St. Joseph Co.	29,725	29,950	29,250	-225	475	27,675	28,125	26,425	-450	1,250	6.9	6.1	9.7
Michigan	4,832,000	4,812,000	4,802,000	20,000	30,000	4,417,000	4,430,000	4,325,000	-13,000	92,000	8.6	7.9	9.9
U.S.A.*	157,573	156,997	157,196	576	377	147,265	147,104	145,113	161	2,152	6.5	6.3	7.7

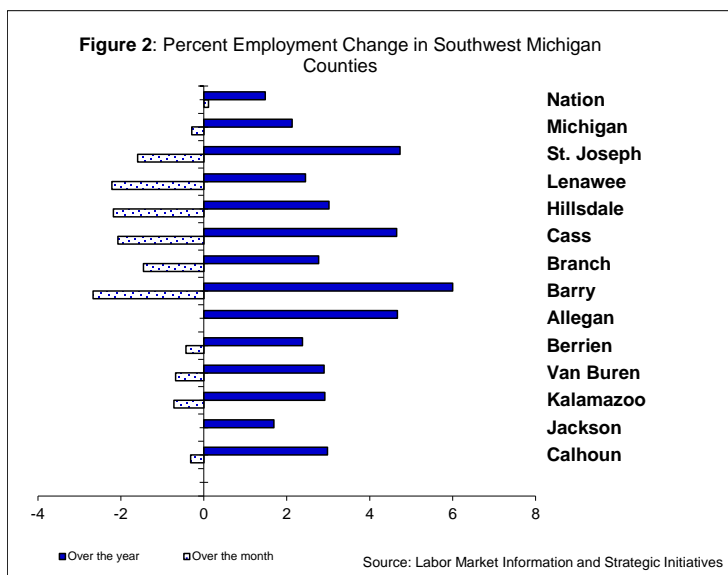
* Expressed in thousands; ** All labor force and employment numbers are rounded to the nearest 25 for counties, 100 for MSAs, and 1,000 for the State and the Nation. Source: Bureau of Labor Market Information and Strategic Initiatives

July Regional Jobless Rates Up With Temporary Seasonal Layoffs in Local Schools

Southwest Michigan metro areas registered modest jobless rate increases in July. Job cuts occurred throughout the region in private and public schools, as part-time support staff were temporarily laid off for the summer break.

Labor Force Mostly Down Over the Month but Up Over the Year

Civilian labor force (civilian residents employed or actively looking for jobs) levels in July were generally flat in regional metro areas, and declined in the majority of non-metro counties. Seasonal workforce reductions occurred in Barry County (-625), Lenawee (-425), Cass (-375), and St. Joseph (-225). Over the year, workforce levels rose in all regional counties, with the exception of Jackson (-100). Labor force additions extended from +75 in Branch and Hillsdale counties to +1,775 in Allegan. Considerable workforce gains of over 1,000 were also noted in Kalamazoo (+1,550) and Barry (+1,350).

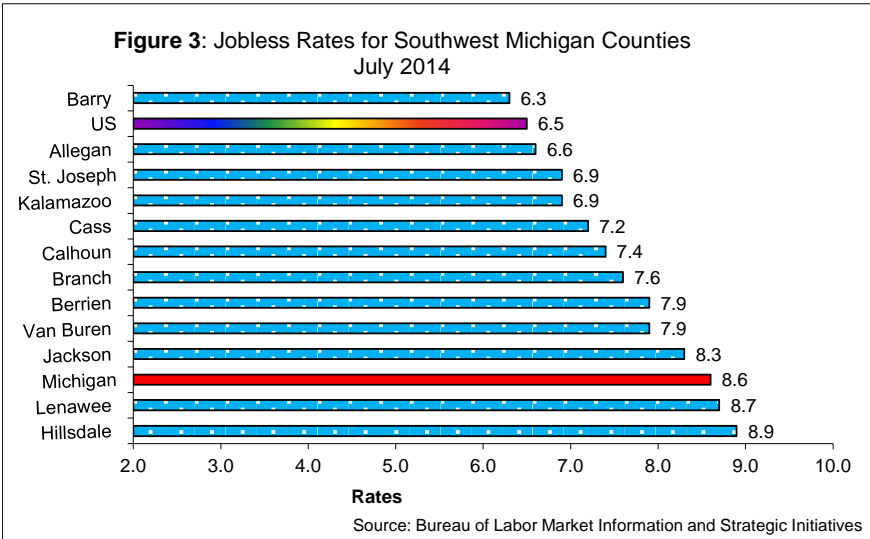


Employment Was Down Seasonally Over the Month but Up Substantially Over the Year

Household employment levels in July were also little changed in local metro areas, with the exception of the Kalamazoo MSA, where job cuts in the public sector caused a monthly employment drop of -1,200. In non-metro counties, employment generally fell seasonally in July, with the exception of Allegan where jobs remained flat. Job cuts were mostly due to temporary layoffs of support staff in local education. Employment reductions ranged from -200 in Calhoun to -925 in Lenawee County. Barry County employment fell seasonally by about 800 positions in July.

Over the year, employment advanced considerably in all regional labor markets. Significant job gains since July 2013 in metro counties were registered in Kalamazoo (+3,400), Calhoun (+1,800), Berrien (+1,600), and Jackson (+1,100). Barry County, which is part of the Grand Rapids MSA, also registered

a significant employment addition of +1,650. Allegan led non-metro counties with a robust year-to-year job gain of +2,425, followed by Cass (+1,050) and Lenawee (+975).



Regional Jobless Rates Edged Up in July but Were Down Significantly Over the Year

Most counties of Southwest Michigan had minor monthly unemployment rate increases, ranging from +0.3 percentage points in Van Buren to +0.8 in Barry. The exception was Lenawee County which recorded a jobless rate rise of +1.1 percentage points over the month in July. The rate inched up by an average of +0.5 percentage points in regional metro counties and by +0.7 in non-metro counties, excluding Lenawee.

Barry County had a lower jobless rate than the nation's unadjusted rate of 6.5 percent, while 10 of 12 regional labor markets recorded jobless rates that were below the statewide average. Only Lenawee and Hillsdale counties showed unemployment rates above the Michigan unadjusted unemployment rate of 8.6 percent in July. Over the year, jobless rate reductions in Southwest Michigan averaged one and one-half percentage points.

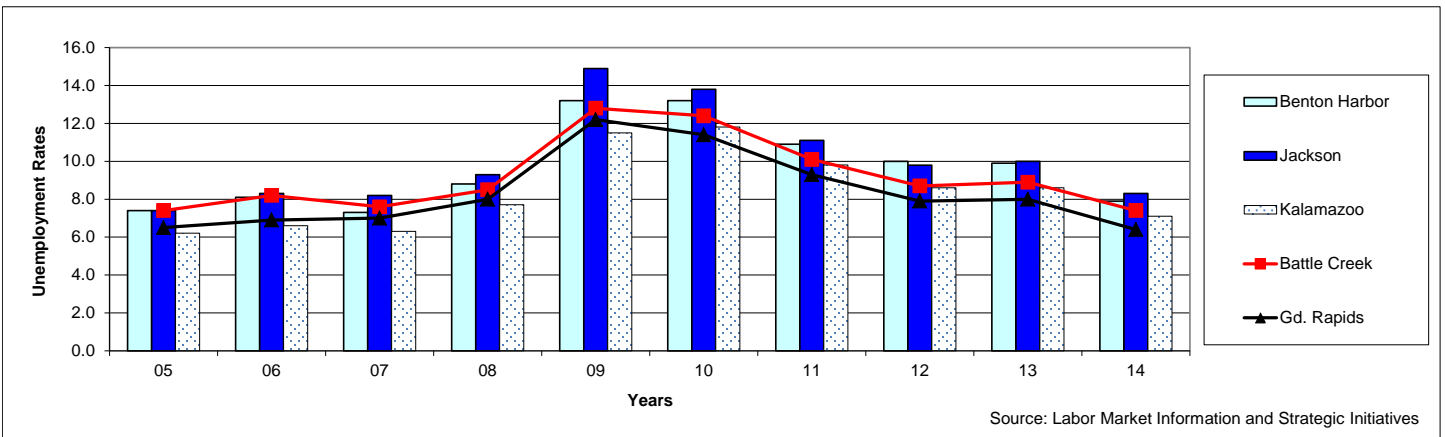
Figure 4: Local Metro Area July Unemployment Rates Since 2005

Unemployment rates for regional metro areas were relatively stable between 2005 and 2008, although at higher rates than the levels in the early 2000s. July jobless rates for all four local metro areas escalated by an average of 4.1 percentage points during the Great Recession.

However, since 2010, unemployment rates in all four regional metro areas have declined significantly by an average of -5.1 percentage points by July 2014, although at lower labor force levels. In fact, current rates for the Battle Creek and Grand Rapids MSAs are lower than the pre-recessionary 2007 levels, while the jobless rates in the remaining three MSAs of Benton Harbor, Jackson, and Kalamazoo were similar or above the rates in 2007.

Year \ Areas	05	06	07	08	09	10	11	12	13	14
Benton Harbor	7.4	8.1	7.3	8.8	13.2	13.2	10.9	10.0	9.9	7.9
Battle Creek	7.4	8.2	7.6	8.5	12.8	12.4	10.1	8.7	8.9	7.4
Gd. Rapids	6.5	6.9	7.0	8.0	12.2	11.4	9.3	7.9	8.0	6.4
Jackson	7.4	8.3	8.2	9.3	14.9	13.8	11.1	9.8	10.0	8.3
Kalamazoo	6.2	6.6	6.3	7.7	11.5	11.8	9.8	8.6	8.6	7.1

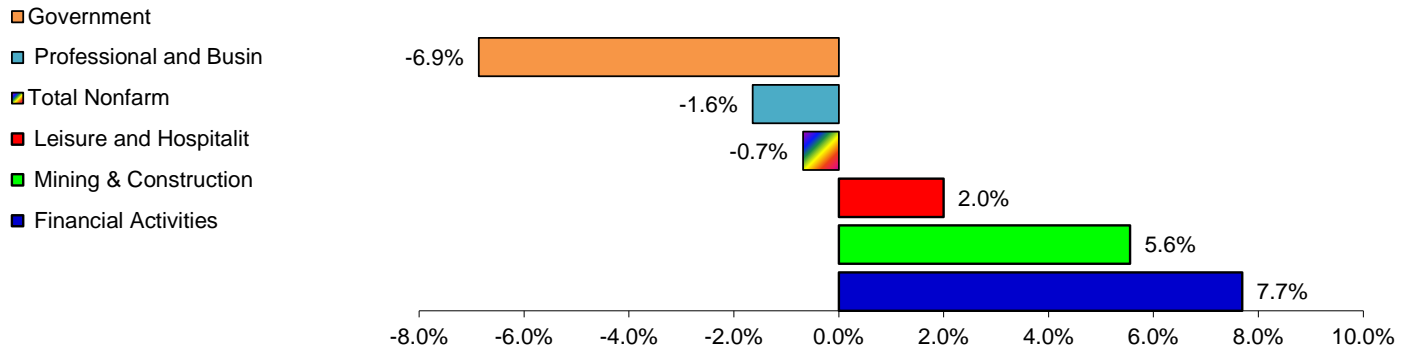
Figure 5: Comparing the Trend of Local MSAs' July Unemployment Rates Since 2005



Nonfarm Payroll Jobs Fell Seasonally in July in All Regional Metro Areas

In July, all four Southwest metro areas recorded seasonal job cuts in the educational sector as support staff in local school districts were temporarily laid off for the summer. Kalamazoo also recorded a job addition in manufacturing.

Figure 6: Sectors with Payroll Job Change (June - July 2014)
Battle Creek MSA

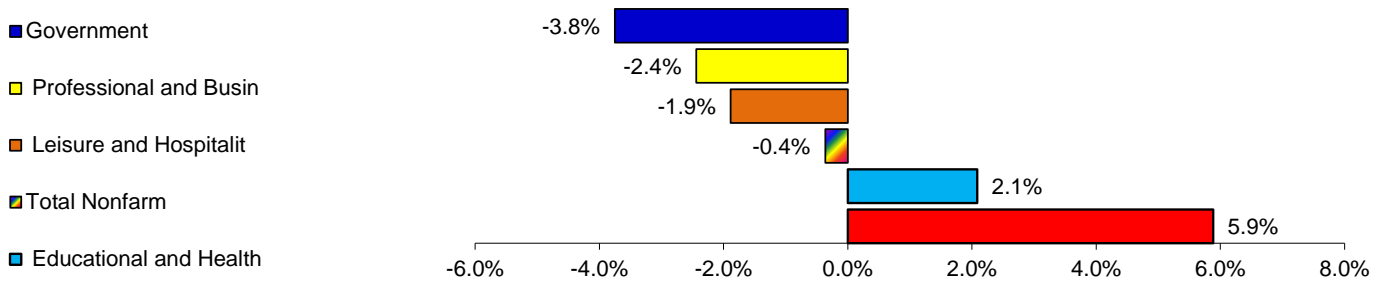


Source: Labor Market Information and Strategic Initiatives

July nonfarm payroll jobs in the **Battle Creek MSA** (Calhoun County) were 400 below June levels, due mainly to seasonal employment cuts in public education (-700). Professional and business services also edged down by 100 positions. However, Battle Creek added 100 jobs each in construction, financial activities, and retail trade. Total nonfarm payroll jobs in the Battle Creek MSA were estimated at 58,400 in July.

Over the year, manufacturing added 700 positions to the area’s workforce, with a gain of 500 in transportation equipment alone. Employment in leisure and hospitality advanced by 300 year to year, and professional and business services created 200 new positions. However, employment in government fell by 300. Total payroll jobs in Battle Creek were 1,100 or +1.9 percent above the July 2013 level.

Figure 7: Sectors with Payroll Job Change (June - July 2014)
Jackson MSA

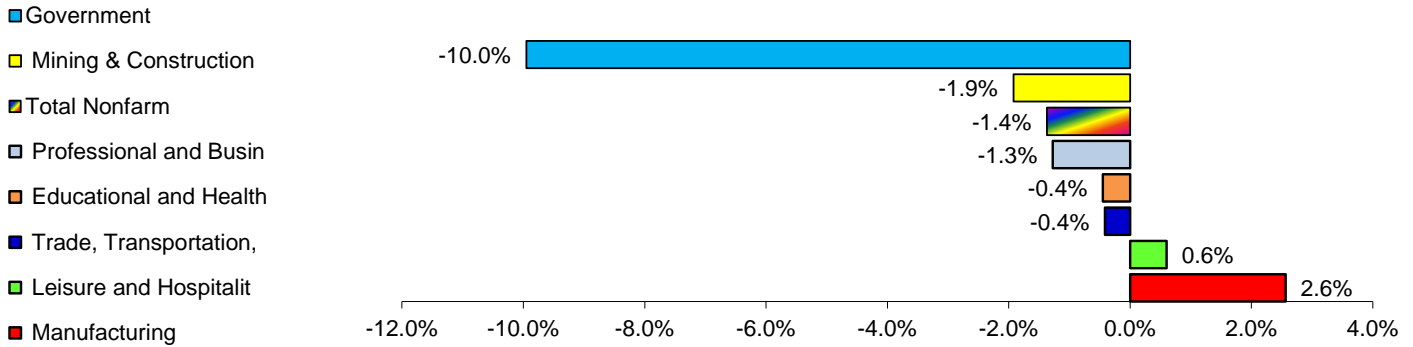


Source: Labor Market Information and Strategic Initiatives

Nonfarm payroll jobs in the **Jackson MSA** (Jackson County) inched down by a mere 200 in July, mainly from seasonal employment cuts in local education (-300). Professional and business services as well as leisure and hospitality each cut 100 positions over the month. However, a 200-job gain was recorded in private education and health care services, and employment in construction edged up by 100. Total nonfarm payroll jobs were estimated at 54,700 in July.

Over the year, manufacturing employment advanced by 400; and a 100-job gain each was recorded in construction, professional and business services, and other private services (laundry, personal care, car repair, etc.). However, jobs in all other sectors inched down or remained flat compared to July 2013 levels. The sectors of private education and health services and government each cut 200 positions over the year, and employment in financial activities edged down 100. Current total nonfarm payroll jobs in Jackson were very similar to the July 2013 levels, inching up by 200.

**Figure 8: Sectors with Payroll Job Change (June - July 2014)
Kalamazoo MSA**

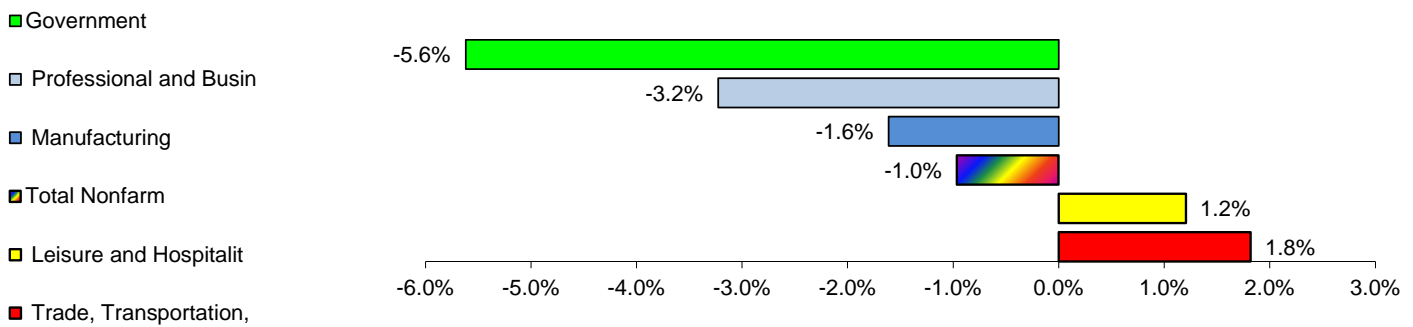


Source: Labor Market Information and Strategic Initiatives

The **Kalamazoo-Portage MSA** (Kalamazoo and Van Buren counties) recorded seasonal job cuts in local and state education of -2,000 in July. This was only partially offset by a 500 job monthly gain in the manufacturing sector. Total nonfarm payroll jobs in the Kalamazoo MSA fell by 1,900 in July to 136,800.

Over the year, most sectors registered job additions, including +800 new positions in leisure and hospitality; +600 in professional and business services; +500 in manufacturing; and +200 each in construction and government. However, retail trade employment inched down 200. Total payroll jobs in Kalamazoo were 2,100 (or +1.6 percent) above July 2013 levels.

**Figure 9: Sectors with Payroll Job Change (June - July 2014)
Niles-Benton Harbor MSA**



Source: Labor Market Information and Strategic Initiatives

The **Niles-Benton Harbor MSA** (Berrien County) lost 600 nonfarm payroll jobs in July to a total of 61,700, mainly due to a seasonal employment cut of 500 in local public education. Manufacturing and professional and business services also dropped by 200 positions each in July. However, employment in trade, transportation, and warehousing increased by 200. Leisure and hospitality also added 100 jobs over the month.

Over the year, jobs in most sectors advanced or remained unchanged. The only exception was employment in private education and health care services which dropped by 800. Employment improved in leisure and hospitality (+900), trade, transportation, and warehousing (+400), professional and business services (+200), and government (+200). Total nonfarm payroll jobs in Benton Harbor were 900 (or +1.5 percent) above the July 2013 level.

*Note: Data in this release is **not seasonally adjusted**. As a result, employment and unemployment trends outlined in this release for July may differ from previously released Michigan **seasonally adjusted** data.*

FOR MORE INFORMATION, please contact the Regional Analyst, Dr. Leonidas Murembya, in Jackson at 517/241-6574, or the Detroit Office of Labor Market Information at 313/456-3090, or visit our website at <http://www.michigan.gov/lmi>.

Figure 10: Southwest Michigan MSAs Payroll Employment - July 2014

Figure 10: Southwest Michigan MSAs Payroll Employment - July 2014							
Battle Creek MSA							
	July 2014	June 2014	July 2013	Monthly Change	Monthly % Change	Annual Change	Annual % Change
Total Nonfarm	58,400	58,800	57,300	-400	-0.7%	1,100	1.9%
Mining, Logging, and Construction	1,900	1,800	1,800	100	5.6%	100	5.6%
Manufacturing	12,300	12,300	11,600	0	0.0%	700	6.0%
Trade, Transportation,	9,300	9,300	9,200	0	0.0%	100	1.1%
Financial Activities	1,400	1,300	1,400	100	7.7%	0	0.0%
Professional and Business	6,000	6,100	6,000	-100	-1.6%	0	0.0%
Educational and Health	10,300	10,300	10,100	0	0.0%	200	2.0%
Leisure and Hospitality	5,100	5,000	4,800	100	2.0%	300	6.3%
Other Services	2,200	2,200	2,200	0	0.0%	0	0.0%
Government	9,500	10,200	9,800	-700	-6.9%	-300	-3.1%
Jackson MSA							
	July 2014	June 2014	July 2013	Monthly Change	Monthly % Change	Annual Change	Annual % Change
Total Nonfarm	54,700	54,900	54,500	-200	-0.4%	200	0.4%
Mining, Logging, and Construction	1,800	1,700	1,700	100	5.9%	100	5.9%
Manufacturing	9,600	9,600	9,200	0	0.0%	400	4.3%
Trade, Transportation, Utilities	11,600	11,600	11,600	0	0.0%	0	0.0%
Information	300	300	300	0	0.0%	0	0.0%
Financial Activities	1,900	1,900	2,000	0	0.0%	-100	-5.0%
Professional and Business	4,000	4,100	3,900	-100	-2.4%	100	2.6%
Educational and Health	9,800	9,600	10,000	200	2.1%	-200	-2.0%
Leisure and Hospitality	5,200	5,300	5,200	-100	-1.9%	0	0.0%
Other Services	2,800	2,800	2,700	0	0.0%	100	3.7%
Government	7,700	8,000	7,900	-300	-3.8%	-200	-2.5%
Kalamazoo MSA							
	July 2014	June 2014	July 2013	Monthly Change	Monthly % Change	Annual Change	Annual % Change
Total Nonfarm	136,800	138,700	134,700	-1,900	-1.4%	2,100	1.6%
Mining, Logging, and Construction	5,100	5,200	4,900	-100	-1.9%	200	4.1%
Manufacturing	20,000	19,500	19,500	500	2.6%	500	2.6%
Trade, Transportation, Utilities	24,100	24,200	24,200	-100	-0.4%	-100	-0.4%
Information	1,000	1,000	1,000	0	0.0%	0	0.0%
Financial Activities	8,200	8,200	8,300	0	0.0%	-100	-1.2%
Professional and Business	15,500	15,700	14,900	-200	-1.3%	600	4.0%
Educational and Health	22,200	22,300	22,200	-100	-0.4%	0	0.0%
Leisure and Hospitality	16,700	16,600	15,900	100	0.6%	800	5.0%
Other Services	5,900	5,900	5,900	0	0.0%	0	0.0%
Government	18,100	20,100	17,900	-2,000	-10.0%	200	1.1%
Niles-Benton Harbor MSA							
	July 2014	June 2014	July 2013	Monthly Change	Monthly % Change	Annual Change	Annual % Change
Total Nonfarm	61,700	62,300	60,800	-600	-1.0%	900	1.5%
Mining, Logging, and Construction	1,900	1,900	1,900	0	0.0%	0	0.0%
Manufacturing	12,200	12,400	12,200	-200	-1.6%	0	0.0%
Trade, Transportation, Utilities	11,200	11,000	10,800	200	1.8%	400	3.7%
Information	500	500	500	0	0.0%	0	0.0%
Financial Activities	2,400	2,400	2,400	0	0.0%	0	0.0%
Professional and Business	6,000	6,200	5,800	-200	-3.2%	200	3.4%
Educational and Health	8,300	8,300	9,100	0	0.0%	-800	-8.8%
Leisure and Hospitality	8,400	8,300	7,500	100	1.2%	900	12.0%
Other Services	2,400	2,400	2,400	0	0.0%	0	0.0%
Government	8,400	8,900	8,200	-500	-5.6%	200	2.4%

Figure 11: Southwest Michigan Works! Agencies Local Area Employment Data – 2014

	January	February	March	April	May	June	July	August	September	October	November	December	Ann Avg
Barry-Branch-Calhoun													
Labor force	113,450	115,100	115,525	115,450	117,650	118,900	118,400						116,350
Employment	105,625	106,500	107,325	108,525	110,475	111,250	109,950						108,525
Unemployed	7,825	8,600	8,175	6,925	7,200	7,675	8,450						7,825
Rate	6.9	7.5	7.1	6.0	6.1	6.4	7.1						6.7
Barry													
Labor force	30,175	30,550	30,775	30,600	31,225	31,725	31,100						30,875
Employment	28,200	28,350	28,625	28,875	29,575	29,950	29,150						28,975
Unemployed	1,975	2,175	2,150	1,725	1,650	1,750	1,950						1,925
Rate	6.5	7.1	7.0	5.7	5.3	5.5	6.3						6.2
Branch													
Labor force	19,150	19,425	19,550	19,600	19,950	20,275	20,100						19,725
Employment	17,625	17,800	18,025	18,300	18,600	18,850	18,575						18,250
Unemployed	1,525	1,625	1,500	1,275	1,350	1,425	1,525						1,450
Rate	8.0	8.4	7.7	6.5	6.7	7.1	7.6						7.4
Calhoun													
Labor force	64,100	65,100	65,200	65,300	66,500	66,900	67,200						65,800
Employment	59,800	60,300	60,700	61,400	62,300	62,400	62,200						61,300
Unemployed	4,300	4,800	4,500	3,900	4,200	4,500	5,000						4,500
Rate	6.8	7.4	7.0	6.0	6.3	6.7	7.4						6.8
Berrien-Cass-Van Buren													
Labor force	129,725	131,575	132,150	132,375	133,975	136,275	135,875						133,125
Employment	118,675	119,700	120,925	123,275	124,725	126,300	125,350						122,700
Unemployed	11,075	11,875	11,200	9,100	9,250	9,950	10,525						10,425
Rate	8.5	9.0	8.5	6.9	6.9	7.3	7.7						7.8
Berrien													
Labor force	69,700	70,700	71,100	71,700	73,300	74,700	74,800						72,300
Employment	64,000	64,500	65,200	66,800	68,000	69,200	68,900						66,700
Unemployed	5,700	6,200	5,900	4,900	5,300	5,500	5,900						5,600
Rate	8.2	8.8	8.2	6.9	7.2	7.4	7.9						7.8
Cass													
Labor force	25,325	25,450	25,500	25,325	25,375	25,825	25,450						25,475
Employment	23,250	23,350	23,500	23,825	23,875	24,125	23,625						23,650
Unemployed	2,100	2,100	2,000	1,500	1,500	1,725	1,825						1,825
Rate	8.3	8.3	7.8	5.9	5.9	6.6	7.2						7.1
Van Buren													
Labor force	34,750	35,425	35,550	35,300	35,325	35,725	35,600						35,375
Employment	31,475	31,875	32,200	32,650	32,825	33,025	32,800						32,400
Unemployed	3,275	3,550	3,350	2,650	2,500	2,700	2,825						2,975
Rate	9.4	10.0	9.4	7.5	7.0	7.6	7.9						8.4
Kalamazoo-St. Joseph													
Labor force	150,800	153,250	154,475	155,575	157,400	159,025	158,475						155,575
Employment	141,450	143,200	144,650	146,875	147,900	148,875	147,500						145,775
Unemployed	9,350	10,050	9,825	8,700	9,475	10,175	10,975						9,800
Rate	6.2	6.6	6.4	5.6	6.0	6.4	6.9						6.3
Kalamazoo													
Labor force	122,375	124,625	125,625	126,400	127,800	129,075	128,750						126,375
Employment	115,000	116,500	117,675	119,300	120,000	120,725	119,850						118,425
Unemployed	7,375	8,125	7,975	7,075	7,775	8,325	8,925						7,950
Rate	6.0	6.5	6.3	5.6	6.1	6.5	6.9						6.3
St. Joseph													
Labor force	28,425	28,650	28,850	29,175	29,600	29,950	29,725						29,200
Employment	26,450	26,700	26,975	27,550	27,900	28,125	27,675						27,350
Unemployed	1,950	1,950	1,875	1,625	1,700	1,825	2,050						1,850
Rate	6.9	6.8	6.5	5.5	5.7	6.1	6.9						6.3
South Central Michigan													
Labor force	132,400	134,275	134,700	134,450	135,500	136,775	136,525						134,950
Employment	121,650	122,725	123,625	124,625	125,400	126,225	124,900						124,175
Unemployed	10,750	11,550	11,075	9,825	10,100	10,550	11,625						10,775
Rate	8.1	8.6	8.2	7.3	7.4	7.7	8.5						8.0
Hillsdale													
Labor force	18,775	19,100	19,100	19,125	19,425	19,950	19,700						19,325
Employment	17,125	17,300	17,400	17,675	17,925	18,325	17,925						17,675
Unemployed	1,650	1,800	1,700	1,425	1,500	1,625	1,750						1,650
Rate	8.8	9.4	9.0	7.5	7.7	8.2	8.9						8.5
Jackson													
Labor force	69,500	70,400	70,700	70,600	71,300	71,700	72,200						70,900
Employment	64,000	64,400	64,900	65,600	66,100	66,200	66,200						65,300
Unemployed	5,500	6,000	5,800	5,100	5,200	5,500	6,000						5,600
Rate	8.0	8.5	8.2	7.2	7.3	7.7	8.3						7.9
Lenawee													
Labor force	44,100	44,800	44,925	44,725	44,800	45,100	44,675						44,725
Employment	40,575	41,075	41,325	41,375	41,425	41,700	40,775						41,175
Unemployed	3,525	3,725	3,600	3,350	3,375	3,425	3,900						3,550
Rate	8.0	8.3	8.0	7.5	7.5	7.6	8.7						8.0