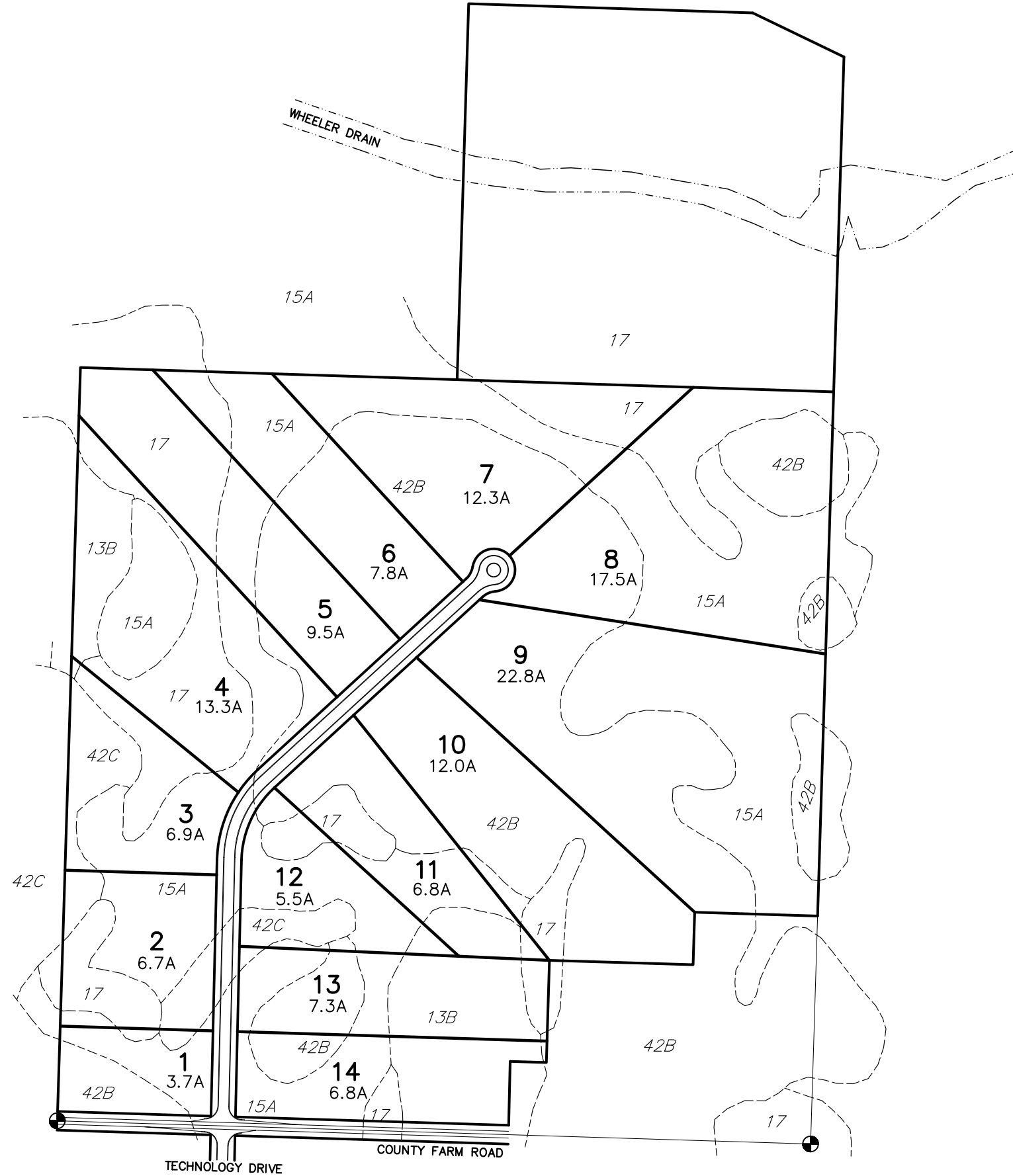


SOIL INFORMATION IS FROM THE 1978 SOIL
OF JACKSON COUNTY BY THE UNITED STATES
DEPARTMENT OF AGRICULTURE

USCS SOIL CLASSIFICATION

- 13B - ORIMAS-SPINKS COMPLEX, 0 TO 6% SLOPES
- 15A - TEASDALE FINE SANDY LOAM, 0 TO 3% SLOPES
- 17 - BARRY LOAM
- 42B - RIDDLES SANDY LOAM, 2 TO 6% SLOPES
- 42C - RIDDLES SANDY LOAM, 6 TO 12% SLOPES



LEGEND

- 11B USCS SOIL CLASSIFICATION CODE
- USCS SOIL CLASSIFICATION BOARDER
- 7** PROPOSED UNIT NUMBER
- 6.8A PARCEL AREA

RIPSTRA & SCHEPPELMAAN, INC.
CIVIL ENGINEERING - LAND SURVEYING
2535 SPRING ARBOR ROAD
JACKSON, MI 49203
Office 517-789-9899
Fax 517-789-0065
www.ripstra-scheppeelman.com

revision	by	date

PRELIMINARY SITE PLAN
BLACKMAN TOWNSHIP LFDA
NORTH JENKINS FARM
SECTION 19, TOWN 2 SOUTH, RANGE 1 WEST
BLACKMAN TOWNSHIP, JACKSON COUNTY

drawn by	JDB	date	05/01/15
checked by	JLR	date	05/01/15
drawing number	15110 SP1.DWG		
project number	R2/2015/15110/DWG		
sheet number	1 of 1		